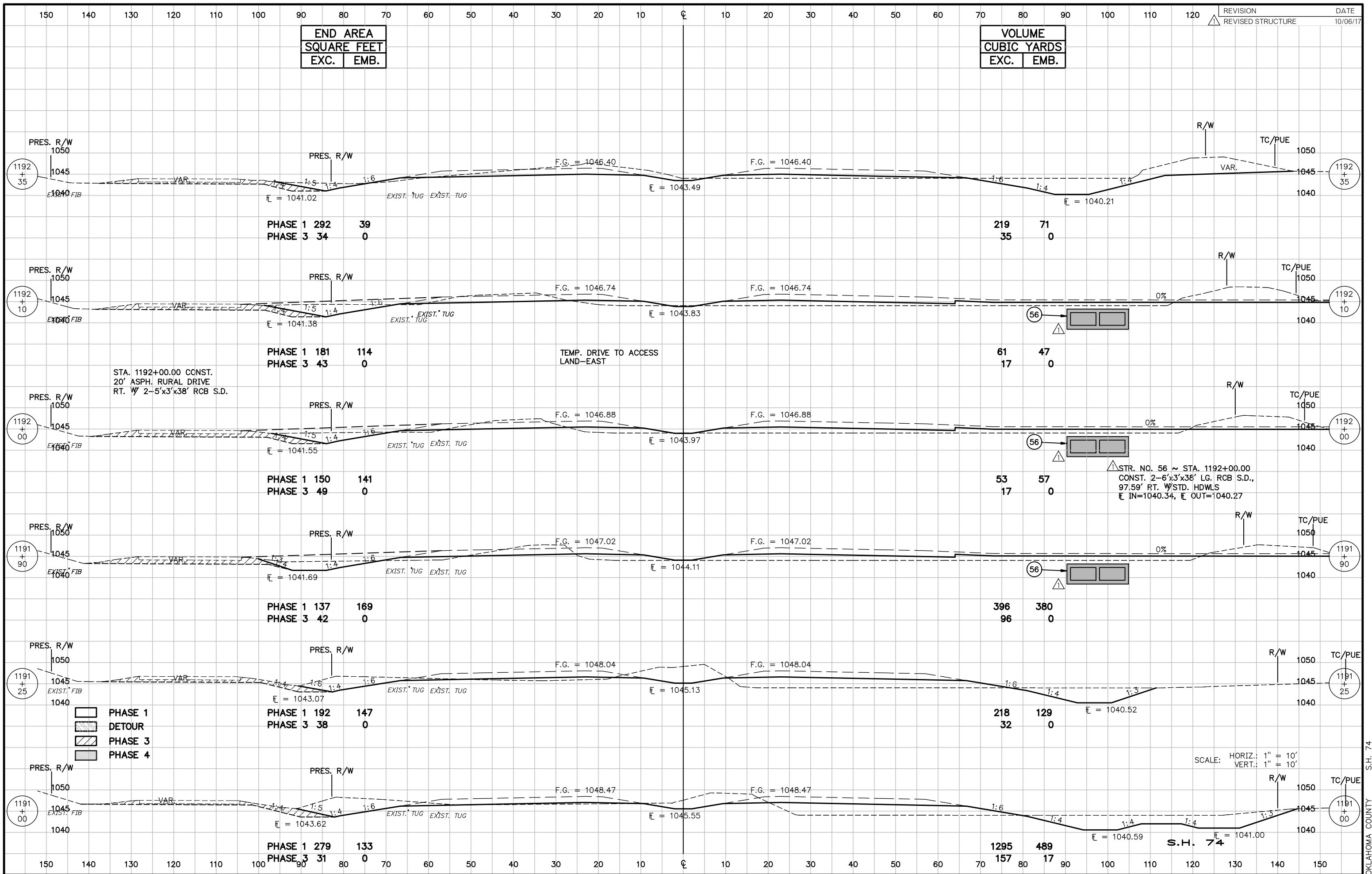


END AREA	
SQUARE FEET	
EXC.	EMB.

VOLUME	
CUBIC YARDS	
EXC.	EMB.



STA. 1192+00.00 CONST.
 20' ASPH. RURAL DRIVE
 RT. W/ 2-5'x3'x38' RCB S.D.

TEMP. DRIVE TO ACCESS
 LAND-EAST

STR. NO. 56 ~ STA. 1192+00.00
 CONST. 2-6'x3'x36' LG. RCB S.D.,
 97.59' RT. W/STD. HDWLS
 E IN=1040.34, E OUT=1040.27

- PHASE 1
- DETOUR
- PHASE 3
- PHASE 4

SCALE: HORIZ.: 1" = 10'
 VERT.: 1" = 10'

S.H. 74